

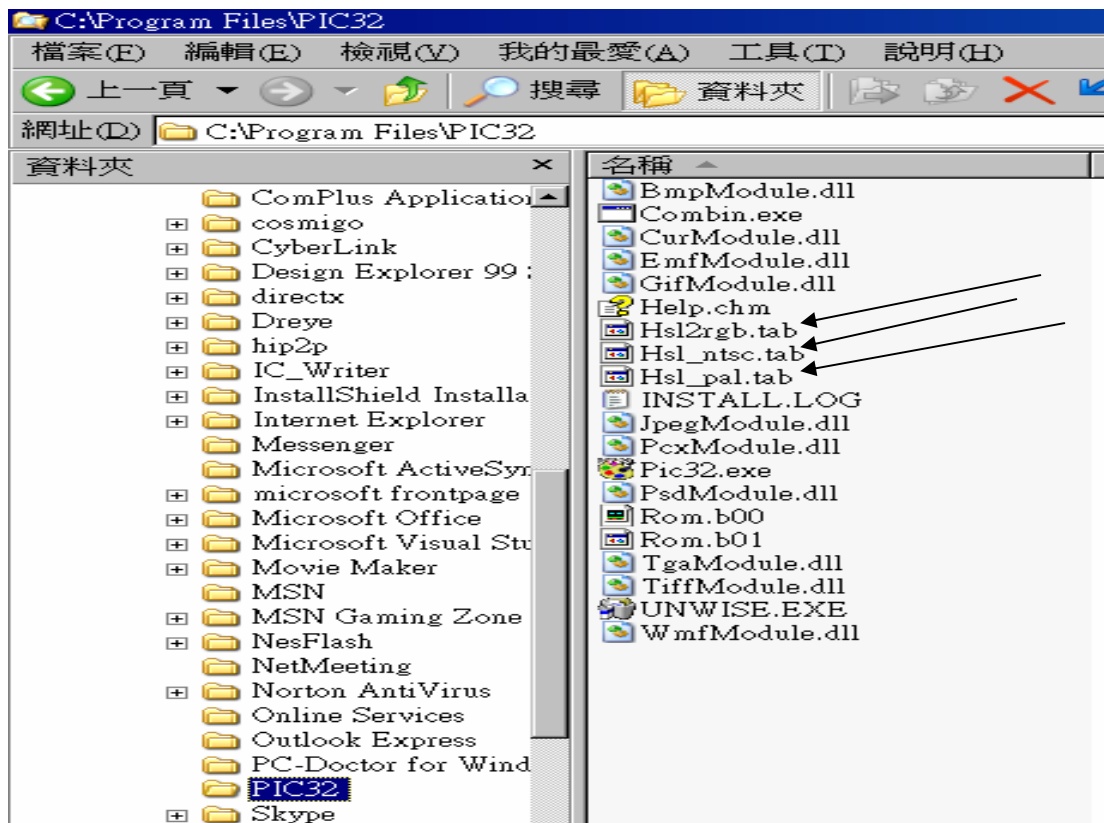
PIC32 Users Note

1>.Please you direct to click on Setup.exe file of pic32.rar. The system can automatically extract this file and install the tool in your computer.

2>. There have one Help.chm in this package, it is the introduction of this tool(Pic32).

Pic32demo.rar is a sample.

3>. PIC32 default color is PAL system(TV). If your color has special concern for NTSC and PAL system, please you substitute for under PIC32 table of content Hsl2rgb.tab with Hsl_ntsc.tab(ie. Changes Hsl2rgb.tab the Hsl_ntsc.tab name) then it is the NTSC system suitable color. Otherwise, like must change the PAL system then substitute for under PIC32 table of content Hsl2rgb.tab with Hsl_pal.tab again(ie. Changes Hsl2rgb.tab the Hsl_pal.tab name), then it is the PAL system suitable color.



4>.Please you to read the Help.chm in advance, this document is the users guide of PIC32.

5>.When the transforms surpasses 256 graphs block can have an IRQ scan line data, namely the current scan line number reduces one.

6>.PIC is the internal definition graph form, it is for the storehouse management use, the user may not need to pay attention.

7>.PAL document is color palette document, each 4Bytes is a RGB, records the palette according to the order of the content. R: one byte, G: one byte, B: one byte, Mask: one byte, (Mask:1 Color may use which on behalf of VT03, Mask:0 Color may not use which on behalf of VT030). This RGB value correspond VT03 HSL.

PIC32 Users Note

8>. Hsl2rgb.tab data form: Please open this file by binary editor, you can see that each data length is 4 Bytes, R: one byte, G: one byte, B: one byte, Mask: one byte, (Mask:1 Color may use which on behalf of VT03, Mask:0 Color may not use which on behalf of VT030). This RGB value correspond VT03 HSL.

9>.Two picture first floors if equally may only take the middle part: Basically, when to mapping this drawing must growth square shape (Such as :512x240 or 738x240 or 1024x240...) and the middle part must be located identical bank, it means that the drawing must draw in the same position. Otherwise after transforms is unable to use. Because of the system can fill in the wrong place. The chart is as below:

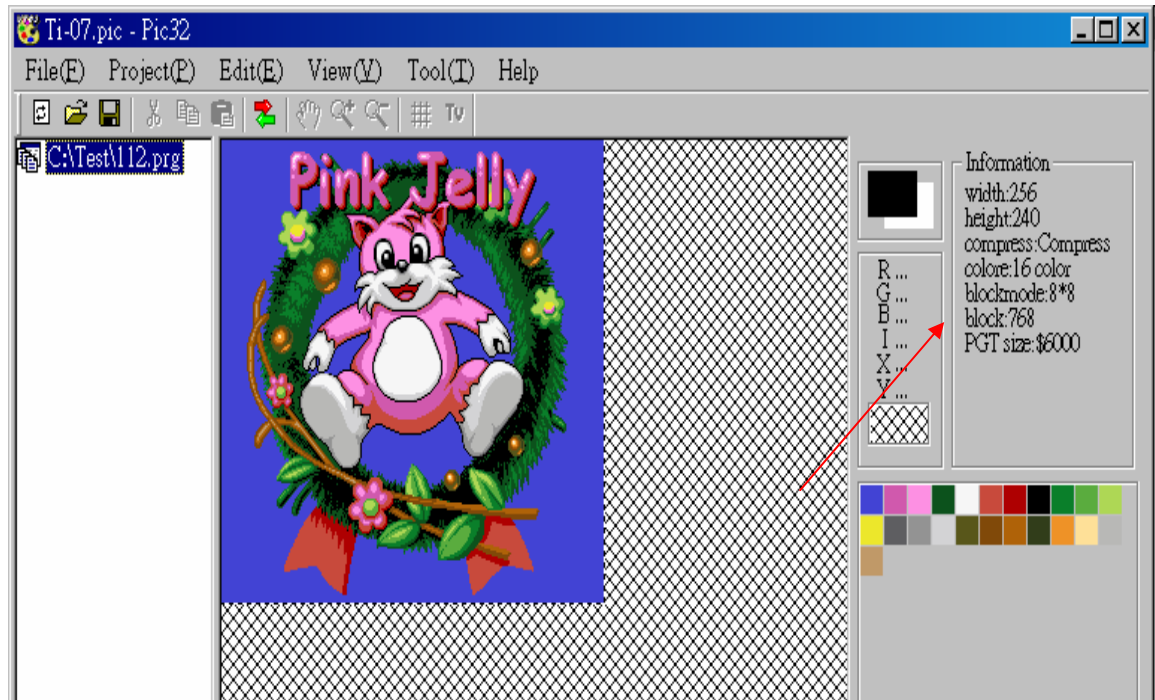


(The arrow and the SINGLE must draw in the same position)

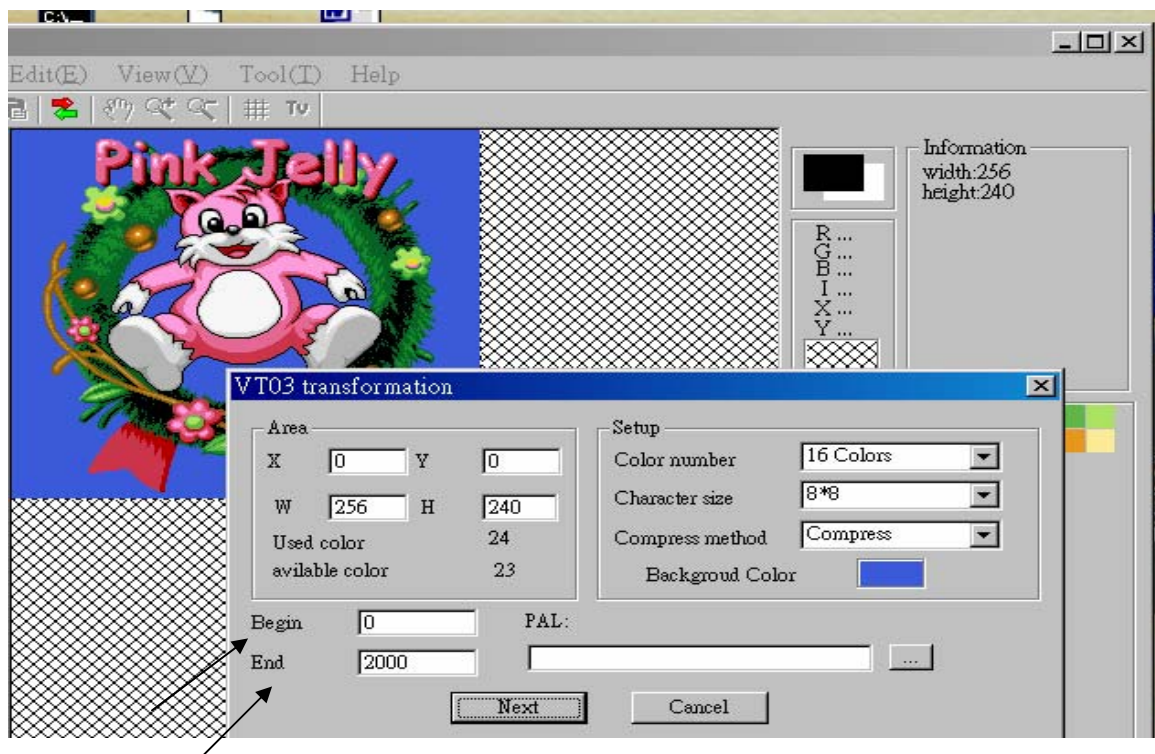
10>. Use the above picture as an example: Because of the identical picture first floor altogether use, so it will have blank area. Certainly is not PGT but is PNT, so you need to clean up in the PNT document by the manual way.

PIC32 Users Note

11>.After transfers the picture files to be possible directly to see which bank and its capacity size : The following chart arrow refers to the position.



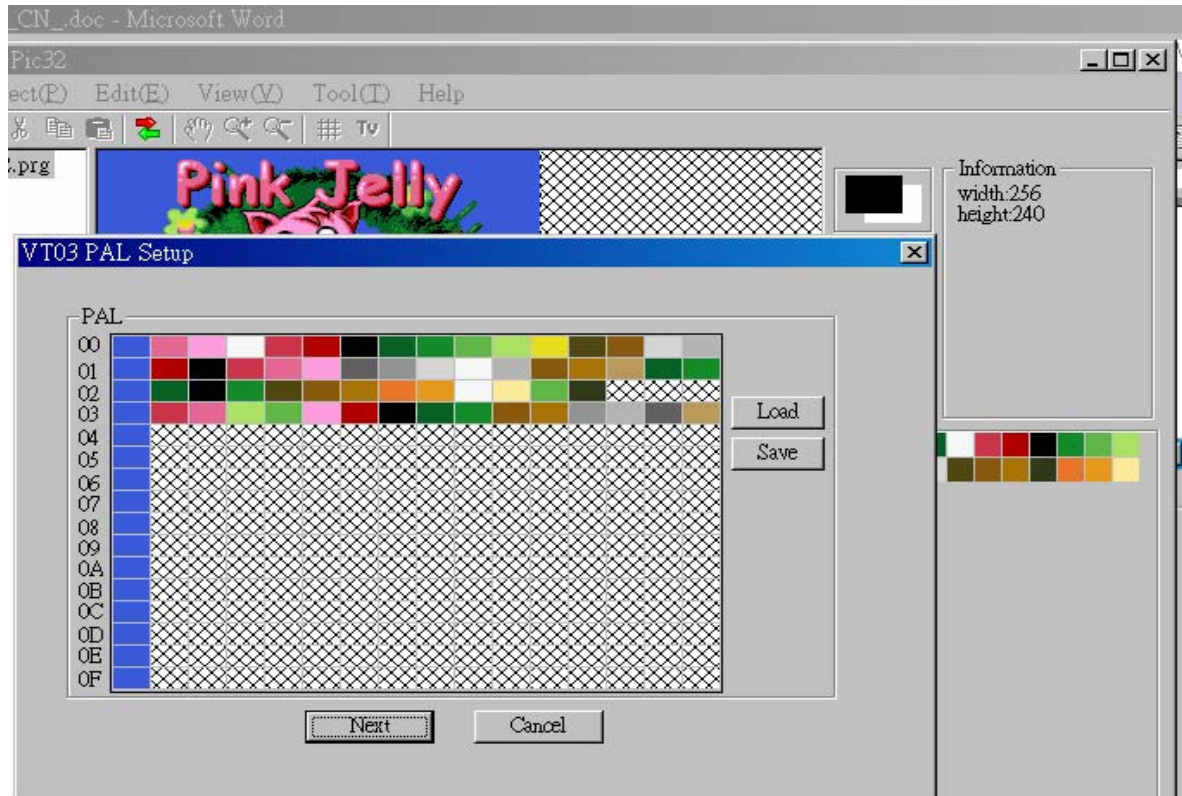
12>.May from subscribe the Bank: The following chart arrow refers to the position.



In the Help.chm, other processing parts have introduced how to edit Combin.ini by your editor and its definition.

PIC32 Users Note

13>.After 64 color graphs transfers may depend on the colors table arrangement :Like chart



You also may use the mouse re-arrange yours color. Also may preserve is a file lets your other picture files use. After the transformation completes meets the military and the political leader with the color to put on the same place (Like chart). This is for facilitate you is unsatisfied regarding the color when to be allowed simultaneously to adjust the identical color.

